

Z-Pad Pediatric Removal

(Change Z-pad every 7 days or sooner if indicated)

- 1.) Stretch-remove transparent dressing
- 2.) Roll off J-loop strip
- 3.) Stretch-remove overlying tape strips

BE CAREFUL TO AVOID CAUSING CATHETER DISPLACEMENT

- 4.) Gently roll Z-Pad off skin
- 5.) Separate luer-lock from Z-Pad
- 6.) Replace with new Z-Pad

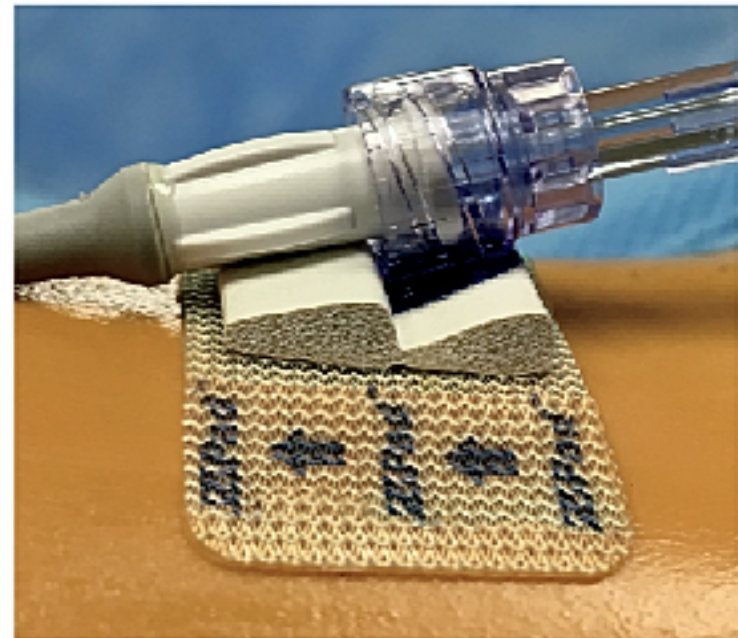
REPLACE TUBING ACCORDING TO INSTITUTION POLICY & PROCEDURE

Contraindications:

- 1.) Do not use if the patient is known or suspected to be allergic or sensitive to any materials contained in the device
- 2.) ZPad is NOT intended for use in neonates

ZPad™

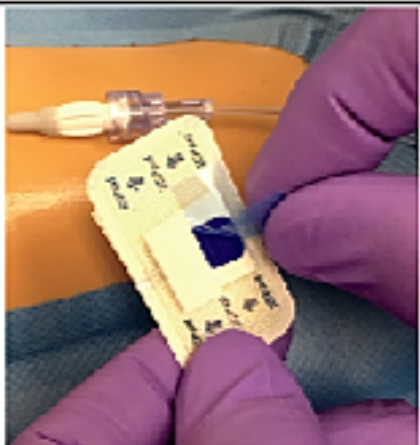
PEDIATRIC STABILIZATION DEVICE
&
CATHETER CUSHION



Z-Pad is a trademark of Maddoc Medical, Inc.
Copyright 2016 Amparo Medical Technologies, Inc. All rights reserved.

Instructions for Use

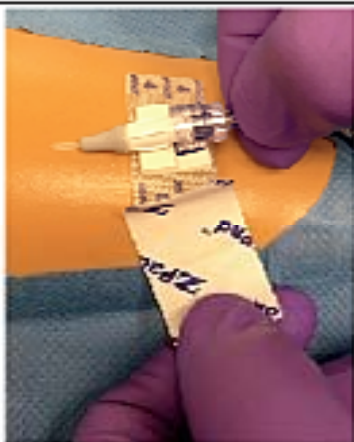
AFTER CATHETER INSERTION, PREPARE SKIN AND ALLOW TO DRY



1. Remove blue liner cover

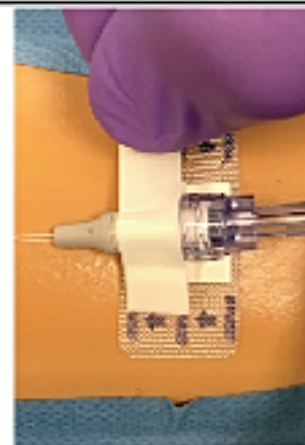


2. Press screw (luer-lock) on blue pad with edge of luer-lock against ledge



3. PEEL away liner. Place Z-pad on skin

OPTIONAL: APPLY CHLORHEXIDINE PATCH AT CATHETER INSERTION SITE



4. Apply tape over hub (optional)



5. Cover with transparent dressing



6. Use hydrocolloid strip to form J-loop